

Global Resource Benchmarking Report

Reduce Costs, Save Time, and Improve Efficiency with Global, Site-Specific Resource Reporting

For managers of large, geographically dispersed facility portfolios, ENGIE Insight's Global Resource Benchmarking Report provides enhanced visibility into energy and water performance compared to specific local and regional building metrics.

The Global Resource Benchmarking Report provides insights into monthly performance and includes an analysis of weather normalized site-level resource performance trends, which can include electricity, gas and water. The solution provides energy managers with a list of "outlier" sites to identify those that are underperforming and those that are performing exceptionally well.

Distill Big Data into Portfolio and Site-Level Insight

Energy managers are being asked to manage very large, diverse, and increasingly global site portfolios. With that responsibility comes several challenges, including:

- Making sense of the daunting mass of site-level data available, with little time for analysis
- Understanding the location-specific impact of weather on energy consumption
- Maximizing limited budgets by focusing on high-priority sites and geographic areas
- Overcoming the common misperception that the largest sites offer the greatest cost savings potential

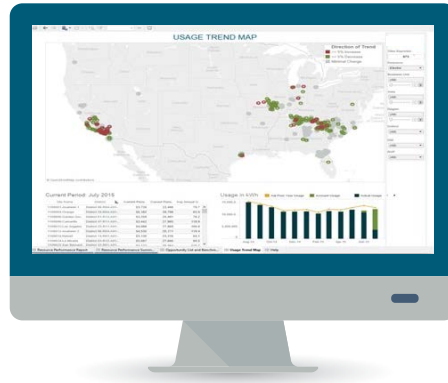
ENGIE Insight's Global Resource Benchmarking Report helps organizations address these challenges by distilling big data into actionable insight. By enabling energy managers to easily determine the root cause of consumption changes, the Global Resource Benchmarking Report allows organizations to focus on sites that need attention and reward sites that are outperforming the rest of the portfolio.

With global data at their disposal, normalized for weather and organization-specific business drivers, energy managers are equipped to engender support and empower energy champions. Ongoing, detailed reporting leverages data to help assess the success of changes at the portfolio, region, country, district or site level.



Drive Performance Improvements

- Benchmarking highlights comparative performance across your portfolio and industry
- Performance reporting reveals:
 - Value of energy programs
 - Cost and consumption drivers
 - Best practices for replication
 - Efficiency opportunities



Inspire Action, Drive Bottom-Line Results

The Global Resource Benchmarking Report provides a statistical analysis of consumption drivers, which are used to benchmark energy and water performance across all facilities in your portfolio across the globe. This process identifies outlier facilities and acts as a vehicle to communicate performance from the portfolio summary down to the individual site level. Key features include:

- At-a-glance visualizations of energy consumption patterns that are easy to share up the chain of command, from site and regional leadership to the C-Suite
- Cost driver analysis on electricity, gas and water
- Quick visibility into meaningful metrics across global portfolios to prioritize energy management program actions
- Global usage trend map, with 'year-over-year' site data to highlight emerging issues
- Data normalization for weather, facility size and other business specific variables
- Identification of both outperforming and underperforming outlier sites
- Leverage data to provide feedback in assessing the success of changes
- Custom filtering capabilities
- Custom analytical services and reports are also available upon request

The Global Resource Benchmarking Report is designed to provide energy managers with quick insights to optimize programs by focusing in high priority areas. Armed with site, country and portfolio-level performance data, organizations can take the next step towards action that will deliver powerful results.



Data:

Reveals more opportunity



Insight:

Reshapes business strategy



Action:

Reveals results



Powerful Results

CONTACT US TODAY

1313 N Atlantic St Ste 5000
Spokane, WA 99201-2330

(800) 767-4197

info.insight@engie.com

engieinsight.com

